



Industrial & Allied Service Ltd

18 Second Kuku Crescent, Kuku Hill - Osu, Accra – Ghana.
 Tel: 233-21-762909, 233-21-771437; cell: 233-244-671-668; fax: 233-21-762910;
 Email: ias@ghana.com

Meters Sold & Serviced By IAS



Products

Meter Models

Meter models listed in order of Maximum Nominal Flow Rates. Maximum Non-Shock Working Pressure(PSI) ratings are based on products at temperatures below 160⁰ F (71⁰C)

Maximum Nominal Flow Rate	Standard Flange Size*	Primary Material	Material Classes Available	150 PSI 10.5 BAR 1034KPa	275PSI 19BAR 1896KPa	300 PSI 19 BAR 2068 KPa	350 PSI 21 BAR 2068 KPa	720 PSI 25 BAR 2413 KPa	1,440 PSI 100 BAR 9927 KPa
30GPM (113L/min)	1 ½" NPT	Aluminum	10				MA-4 +		
60 GPM (227L/min)	1 ½"	Aluminum	1,2,3,4,10,14,16 & 30	M-5	M-5**		MA-5+		
	2" Optional	Stainless Steel	8	M-5					
100 GPM (380L/min)	2"	Aluminum	1,2,3,4,10,14,15 & 16	M-7	M-7**				
	1 ½" Optional	Stainless Steel	8	M-7					
		Cast Iron	7, 27 & 37	M-7	M-7**				
	2"	Brass	20	M-7	M-7**				
150GPM (550L/min)	2"	Steel	1,2,7,10,14,16 & 37	MS-15	MSAA-7	MSA-7		MSB-7	MSC-7
		Aluminum	1 & 2	M-10	M-10**				
	2"								
200GPM (757L/min)	3"	Aluminum	1,2,3,4,10,14,15 & 16	M-15	MS-15**		MA-15+		
	3"	Steel	1,2,10,14 & 16	MS-15	MSAA-15	MSA-15		MSB-15	MSC-15
	3"	Stainless Steel	8		MSAA-15				
300GPM (1,136L/min)	3"	Aluminum	1 & 2	M-25	M-25**				
350GPM (1,325L/min)	4"								
	3" Optional	Aluminum	1,2,3,4,14,15 & 16	M-30					
	3"	Cast iron	7,27,37 & 47	M-30					

450GPM (1,700L/min)	3"	Steel	1,2,10,14 & 16	MS-30	MSAA-30	MSA-30	MSB-30	MSC-30
	3"	Stainless Steel	8		MSAA-30			
600GPM (2,271L/min)	4"	Aluminum	1 & 2	M-40				
	3"	Steel	1 & 2	MS-40				
700GPM (2,650L/min)	4"							
	6" Optional	Aluminum	1,2,3,14, & 15	M-80	M-60**			
800GPM (3,000L/min)	4"	Steel	1,2,3 & 14	M-75	MSAA-75	MSA-75	MSB75	MSC-75
	6"							
1,000GPM (3,785L/min)	4" Optional	Aluminum	2	M-80	M-80*			
	6"	Steel	1,2,10 & 14	MS- 120	MSAA-120	MSA-120	MSB-120	MSC-120
	6"	Stainless Steel	8		MSAA-120			

*Flanges: All standard M-Series Meters are supplied with choice of threaded NPT and BSPT companion flanges...or slip-on welding companion flanges.

MA-Series Meters are supplied threaded NPT Companion flanges.

** 275 PSI working pressure available for meter only. All MS-Series steel case Meter are supplied standard with ANSI flanged connections. DIN Optional. Reducing flanges are available for all steel case Meters

+ MA-Series Meters are all UL Listed for LPG

M™ – SERIES METERS

M – 5™



- Capacity: 60 GPM (227 L/min)
- Case made of aluminum with metering chamber components of various materials as required for classes 1,2,3,4, 14, 16 and 30 construction.
- Choice of companion flanges with 1½" standard and 2" optional NPT or BSPT threads. Also aluminum or steel welding flanges. ANSI and DIN adaptors available.

M – 7™



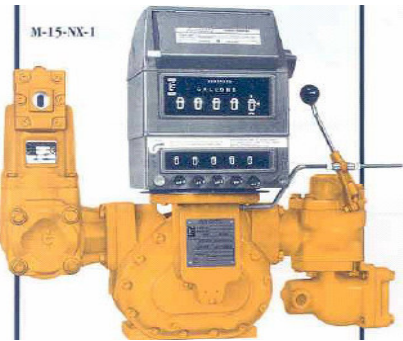
- Capacity: 100 GPM (380 L/min)
- Case made of aluminum with metering chamber components of various materials as required for classes 1,2,3,4, 14, 15 and 16 construction.
- Choice of companion flanges with 2" standard and 1½" optional...NPT or BSPT threads. Also aluminum or steel welding flanges. ANSI and DIN adaptors available.

M – 10™




- Capacity: 150 GPM (550 L/min)
- Case made of aluminum with meter element components of various materials as required for Class 1 or 2 construction (for metering refined petroleum products only, including aviation fuels).
- Choice of 2” NPT, BSPT or Slip Weld Companion Flanges. ANSI and DIN adaptor available

M – 15™




- Capacity: 200 GPM (760 L/min)
- Case made of aluminum with meter element components of various materials as required for Classes 1,2,3,4,14,15 and 16 construction
- Choice of 3” NPT and 3” BSPT connections. Also 3” aluminum or steel welded flanges


MS™ – Series Meters (MS Meters)

 MS-15-G-1	MS-7™: <ul style="list-style-type: none">• Capacity : 100 GPM (380 L/min)• Supplied with 2” ANSI flanged connections
	MS-15™: <ul style="list-style-type: none">• Capacity : 200 GPM (760 L/min)• Supplied with 3” ANSI flanged connections
	MS-30™: <ul style="list-style-type: none">• Capacity : 350 GPM (1,325 L/min)• Supplied with 3” ANSI flanged connections
	MS-40™: <ul style="list-style-type: none">• Capacity : 450 GPM (1,700 L/min)• Supplied with 3” ANSI flanged connections
	MS-75™: <ul style="list-style-type: none">• Capacity : 700 GPM (2,650 L/min)• Supplied with 4” ANSI flanged connections
	MS-120™: <ul style="list-style-type: none">• Capacity : 1000 GPM (3,785 L/min)• Supplied with 6” ANSI flanged connections

MS™ – Series Meters (MSAA Meters)

 <p>MSAA-30-N-1</p>	<p>MSAA-7™:</p> <ul style="list-style-type: none"> Capacity : 100 GPM (380 L/min) Supplied with 2" ANSI flanged connections
	<p>MSAA-15™:</p> <ul style="list-style-type: none"> Capacity : 200 GPM (760 L/min) Supplied with 3" ANSI flanged connections
	<p>MSAA-30™:</p> <ul style="list-style-type: none"> Capacity : 350 GPM (1,325 L/min) Supplied with 3" ANSI flanged connections
	<p>MSAA-40™:</p> <ul style="list-style-type: none"> Capacity : 450 GPM (1,700 L/min) Supplied with 3" ANSI flanged connections
	<p>MSAA-75™:</p> <ul style="list-style-type: none"> Capacity : 700 GPM (2,650 L/min) Supplied with 4" ANSI flanged connections
	<p>MSAA-120™:</p> <ul style="list-style-type: none"> Capacity : 1000 GPM (3,785 L/min) Supplied with 6" ANSI flanged connections

MS™ – Series Meters (MSA Meters)

 <p>MSA-30-GY-10</p>	<p>MSA-7™:</p> <ul style="list-style-type: none"> Capacity : 100 GPM (380 L/min) Supplied with 2" ANSI flanged connections
	<p>MSA-15™:</p> <ul style="list-style-type: none"> Capacity : 200 GPM (760 L/min) Supplied with 3" ANSI flanged connections
	<p>MSA-30™:</p> <ul style="list-style-type: none"> Capacity : 350 GPM (1,325 L/min) Supplied with 3" ANSI flanged connections
	<p>MSA-75™:</p> <ul style="list-style-type: none"> Capacity : 700 GPM (2,650 L/min) Supplied with 4" ANSI flanged connections
	<p>MSA-120™:</p> <ul style="list-style-type: none"> Capacity : 1000 GPM (3,785 L/min) Supplied with 6" ANSI flanged connections

MS™ – Series Meters (MSB Meters)



MSB-75-E-14

MSB-7™:

- Capacity : 100 GPM (380 L/min)
- Supplied with 2” ANSI flanged connections

MSB-15™:

- Capacity : 200 GPM (760 L/min)
- Supplied with 3” ANSI flanged connections

MSB-30™:

- Capacity : 350 GPM (1,325 L/min)
- Supplied with 3” ANSI flanged connections

MSB-75™:

- Capacity : 700 GPM (2,650 L/min)
- Supplied with 4” ANSI flanged connections

MSB-120™:

- Capacity : 1000 GPM (3,785 L/min)
- Supplied with 6” ANSI flanged connections

MS™ – Series Meters (MSC Meters)



MSC-120-A-1

MSC-7™:

- Capacity : 100 GPM (380 L/min)
- Supplied with 2” ANSI flanged connections

MSC-15™:

- Capacity : 200 GPM (760 L/min)
- Supplied with 3” ANSI flanged connections

MSC-30™:

- Capacity : 350 GPM (1,325 L/min)
- Supplied with 3” ANSI flanged connections

MSC-75™:

- Capacity : 700 GPM (2,650 L/min)
- Supplied with 4” ANSI flanged connections

MSC-120™:

- Capacity : 1000 GPM (3,785 L/min)
- Supplied with 6” ANSI flanged connections



MA-4-CX-10

MA-4™ / MA-5™

MA-4 Meters in Class 10 construction are designed specifically for LPG motor fuel applications:

- Capacity: 30 GPM (115 L/min.)
- Choice of 1 ½” standard and 2” optional companion flanges.

MA-5 Meters in Class 10 construction are designed for LPG truck and high speed LPG motor fuel applications :

- Capacity: 60 GPM (225 L/min.)
- Choice of 1 ½” standard and 2” optional companion flanges.



MA-7-GY-10

MA-7™

MA-7 Meters in Class 10 construction are designed for LPG truck and bulk loading applications (UL Listed)

- Capacity: 100 GPM (380 L/min.)
- Class 12 construction for NH₃ (Anhydrous Ammonia) service available upon request
- Choice of 2” NPT standard, 1 ½” optional companion flanges



MA-15-GY-10

MA-15™

MA-15 Meters in Class 10 construction are designed for LPG truck and bulk loading applications:

- Capacity: 200 GPM (760 L/min.)
- Standard 3” inlet, 2” outlet with choice of NPT, BSPT or steel welding flange (3” outlet optional)

LPG Meter Proving Cart



LC's custom-built portable meter cart provides for a quick/easy method to check the accuracy of your LP Gas meters from a flow range of 5 to 200 GPM.

- No Down Time- Simply connect the reference meter inline during normal operation or by recirculation back into the supply tank (Bobtail).
- Portable- Can be handled and operated by one person and easily transported from one location to another.
- Accuracy- Reference meter is calibrated and sealed conforming to NIST Standards. Can be used to check any LPG meter regardless of manufacturer.
- System Includes: Operator's Manual; LC Model MA-4,

MA-5, MA-7 or MA-15 LPG* Reference Meter, Portable Cart, Hoses and Fittings; Certified Test Report.

* Reference meter accuracy is traceable to a primary standard, certified, volumetric prover.

Technical Assistance

Selecting the right pump may require more detailed information than presented. We can help you find the correct equipment to ensure the best performance possible for your specific application. Don't hesitate to contact us if you have a unique fluid-handling problem.

Tel: 233-21-762909, 233-21-771-437; fax: 233-21-762910; cell: 233-244-671-668; Email: ias@ghana.com